

# Connecting to Community: Using Partnerships to Reach Historically Excluded Groups

Space Science Institute



# Facilitator Introductions

Claire Ratcliffe Adams

Stephanie Vierow-Fields



# Agenda

Ice Breaker

Overview of SEAL Project

Why STEAM in Libraries?

Developing Partnerships

Partnerships for Solar Science  
Programs

Q&A and Discussion



# Icebreaker

---

Big Sun, Small  
Moon?



# Sun...Moon...You!

  
OCTOBER 14, 2023  
ANNULAR SOLAR ECLIPSE

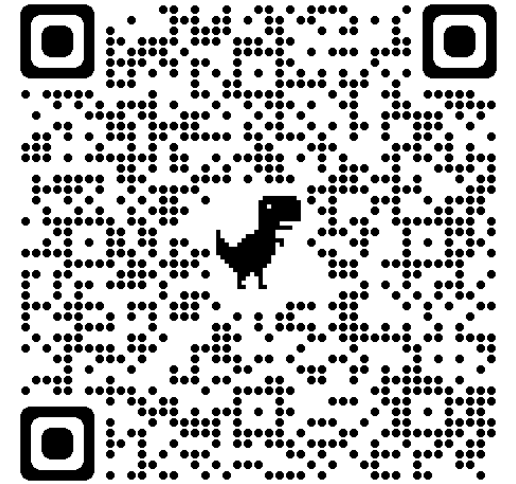
  
APRIL 8, 2024  
TOTAL SOLAR ECLIPSE

A | A  
S AMERICAN  
ASTRONOMICAL  
SOCIETY



Funding from the Gordon and Betty Moore Foundation to provide:

- Approximately 5,000,000 eclipse glasses to public libraries in the U.S., D.C. and territories/protectorates
- In-person training in each state/territory
- Circulating kits to state libraries, including solar telescopes
- Training (in-person and online)
- An interactive community hosted on the STAR Net website



The existing STAR Net community will provide

- Access to the interactive community
- Vetted hands-on activities through the STEM Activity Clearinghouse
- Access to scientists, volunteers and eclipse subject matter experts (SMEs)

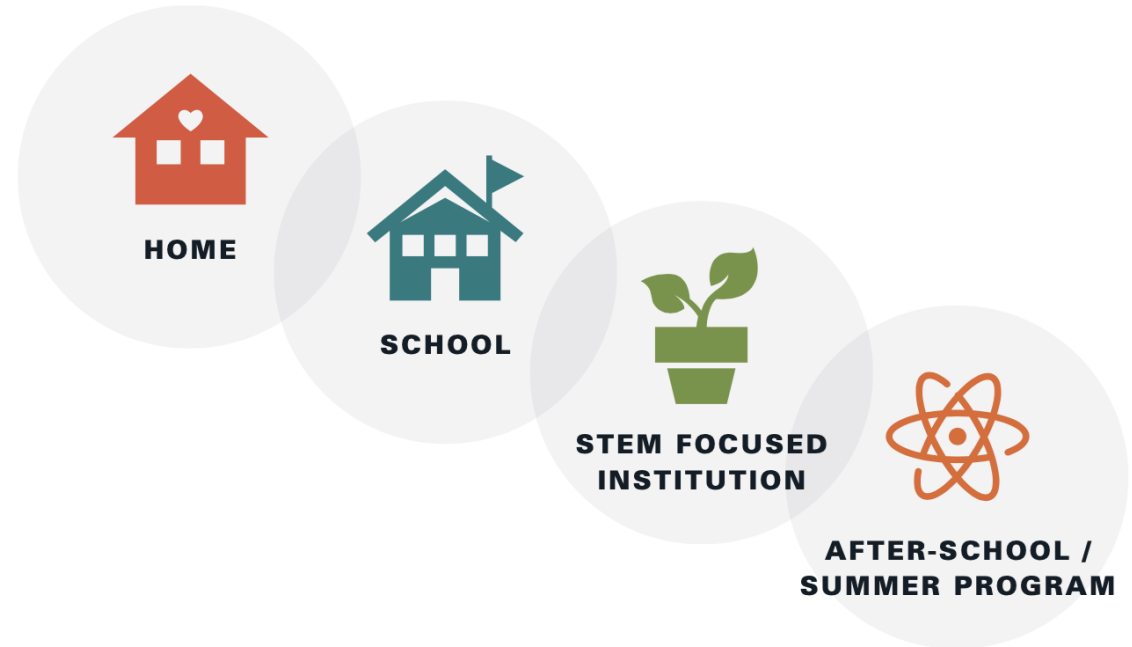


# STE(A)M Ecosystems

**Libraries are part of community learning ecosystems.**

Create opportunities for a STE(A)M-focused Institution

Create opportunities for learning outside of school.



From Ecosystems Framework and Evidence of Impact: Assessing the Impacts of STEM Learning Ecosystems

# Why Libraries?

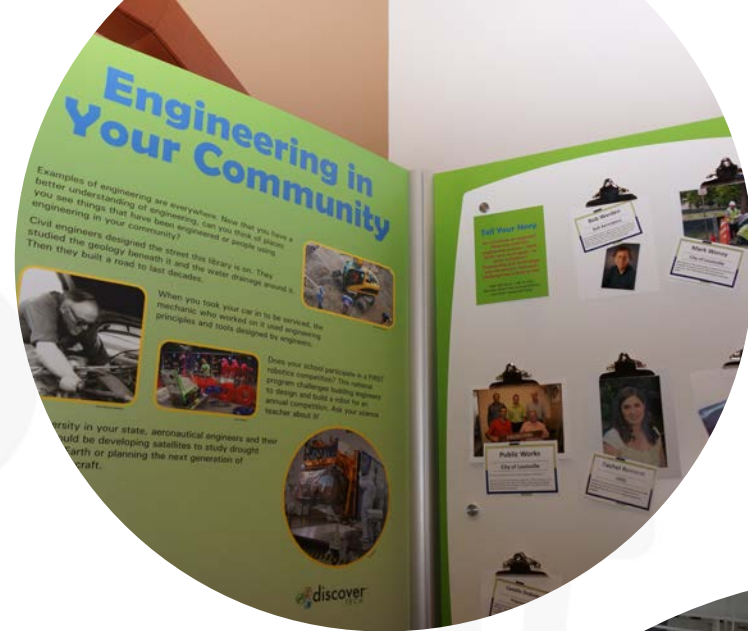


- 70% of the US population visits their local public library at least once a year
- Demographics at library programs on average are a 1:1 match with demographics outside the door
- Librarians are well educated and trained professionals who are comfortable trying new things and sharing results
- Libraries are safe spaces in the community providing:
  - Support in accessing government services
  - Free safety resources (classes, books, etc) for parents
  - A place for homeless patrons to rest safely
  - Translation services
  - Gathering places for cultural groups



# What does *STAR Net* do?

- Exhibits
- Kits
- Professional Development
- Community Dialogues
- Partnership Guidance
- SME Matchmaking
- Events
- Interactive Activities
- Facilitation Strategies
- Resource Dissemination
- Eclipse Glasses!



A group of diverse hands holding up glowing lightbulbs, symbolizing partnership and ideas. The hands are of various skin tones and are positioned around the center of the frame, each holding a single lightbulb. The lightbulbs are illuminated, creating a warm, golden glow. The background is a soft, out-of-focus grey.

# Partnership Discussion

How to leverage partnerships from your community for your community



# Community Asset Mapping

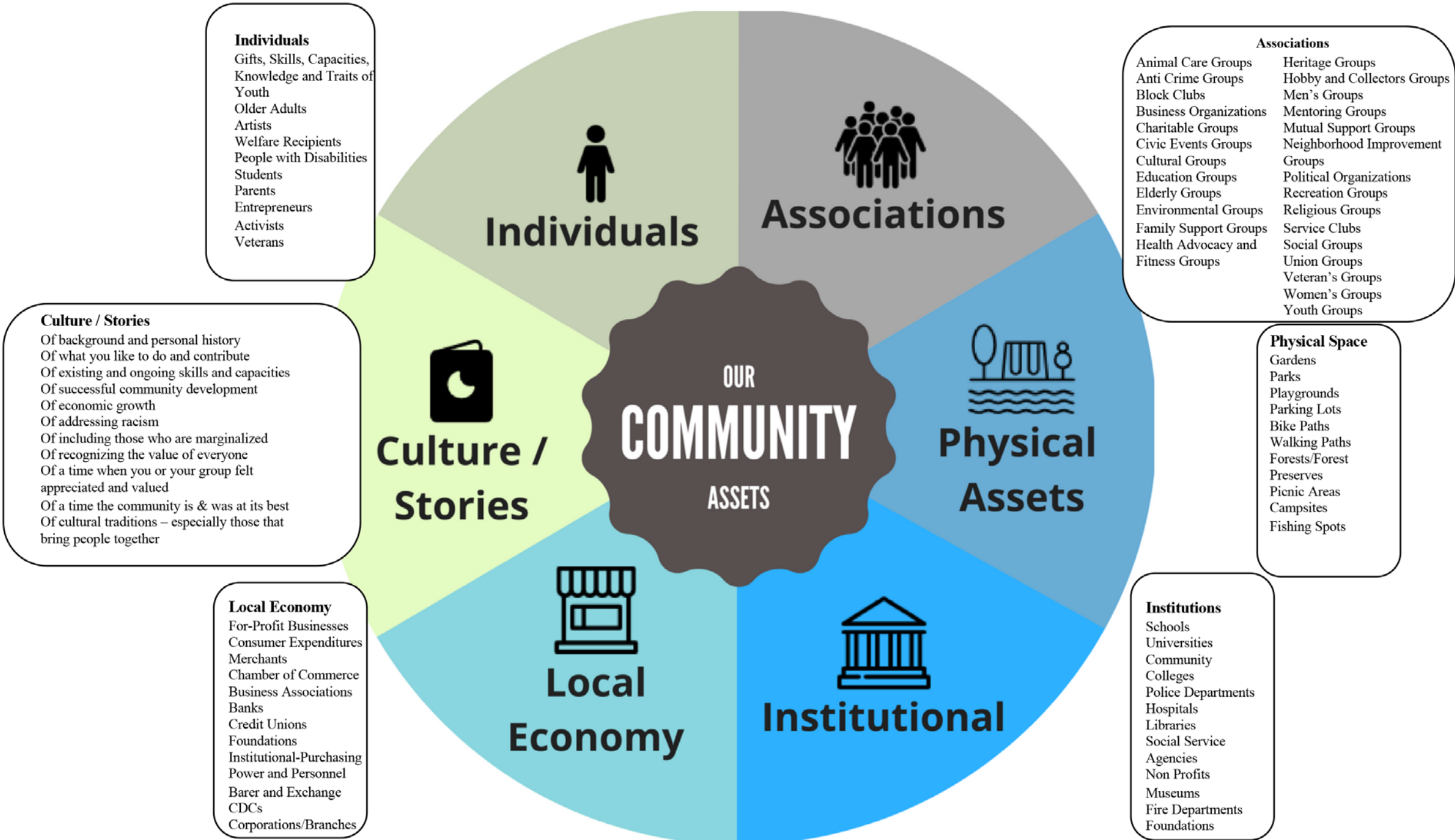


# What is Asset Mapping?

Asset Mapping is a group exercise which enables members of a community to examine their community from an outside perspective.

- It helps you think positively about the place in which you live and work, producing a common view of what is considered important in the community.
- It also challenges you to recognize how other people see and experience the same community and space.
- It is the starting point for strategic planning because it identifies what assets the community has and how they might be utilized in the future.

*It's a way to assess and mobilize what a community already has collectively*



# Boulder Youth

Clubs,  
Sports,  
Outdoors

- 4H
- Little League
- Boulder Rock Climbing
- Junior Crew
- Snowboard Club
- First Lego League

STEAM  
Interests

- Aerospace
- Geology
- Coding and Robotics

Skills

- Art
- Video Editing

Hangouts

- Valmont Bike Park
- Farmers Market
- Boulder Library
- Pearl Street

Virtual

- Animal Crossing
- TikTok
- WhatsApp
- Roblox
- DISCORD
- Whisper
- SnapChat
- Nintendo Switch
- Twitch
- Minecraft
- Pokémon SWORD SHIELD

Events

- YMCA Events
- CU Wizards
- Bolder Boulder
- Library Latinx Festival

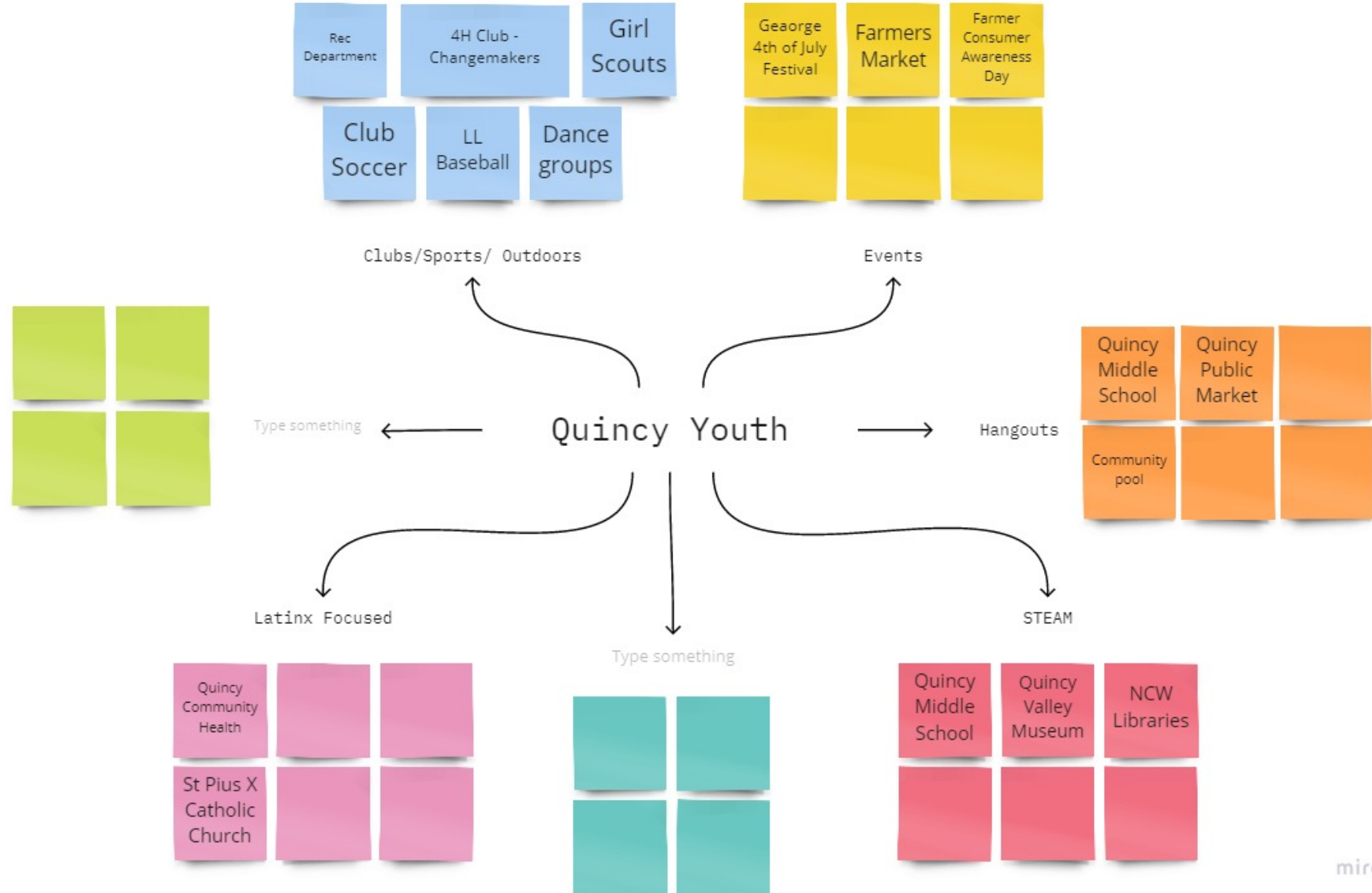
Latinx  
Focused

- Dream Big Initiative
- Generations Program
- REFORMA





# NCW Libraries



# What is a Community Dialogue?

- A Community Dialogue is a loosely facilitated discussion that provides the opportunity for staff and community members to discuss a common, community-based challenge or aspiration.
  - Climate Change
  - Serving Underrepresented Audiences
  - Working with Local Industry
  - Identifying Local Health Concerns
  - Pandemics
  - Programmatic support

*“There is no doubt that the Community Dialogues are beneficial to all parties. I think this method should be employed more often when we are considering all kinds of services, initiatives and programs for our community.”*



**Lisa Jackson - Youth Services Librarian,  
African-American Research Library and  
Cultural Center, Fort Lauderdale, FL**





## How do I reach out?

- Emails and calls; cold approach may be all you have
- Use your network
- Ensure everyone is comfortable with the dynamics of virtual if using
- If there is someone you really want such as a mayor, commissioner, school leader, etc., find the person they can't say "No" to.

# Dialogue Ground Rules

1. Have a “kitchen table” conversations with no head of table. Everyone participates; no one dominates.
2. There are no “right answers.” Draw on your own experiences, views and beliefs. You do not need to be an expert.
3. Keep an open mind. Listen carefully and try hard to understand the views of those who disagree with you.
4. Help keep the discussion on track. Stick to the questions; try not to ramble.
5. It is okay to disagree, but don't be disagreeable. Respond to others how you want to be responded to.
6. Have fun!



What other strategies/tools have you used to develop partnerships/reach underrepresented groups?

# Work Time

- Discuss with your table the partners in your community
- Work on your own to develop either an asset map or Community Dialogue Idea
- Share-out





Thank you!

Any Questions?